



# KENT HOUSING GROUP - HEALTH & SOCIAL CARE SUB GROUP

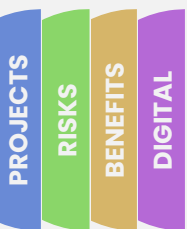


Sam Lain-Rose, Digital Lead

Monday, 12 June 2023

1

## Introduction to the Financial Hardship Programme & Helping Hands



Digital Inclusion & Capabilities  
(Digital Kent)

Business & Self-Employed

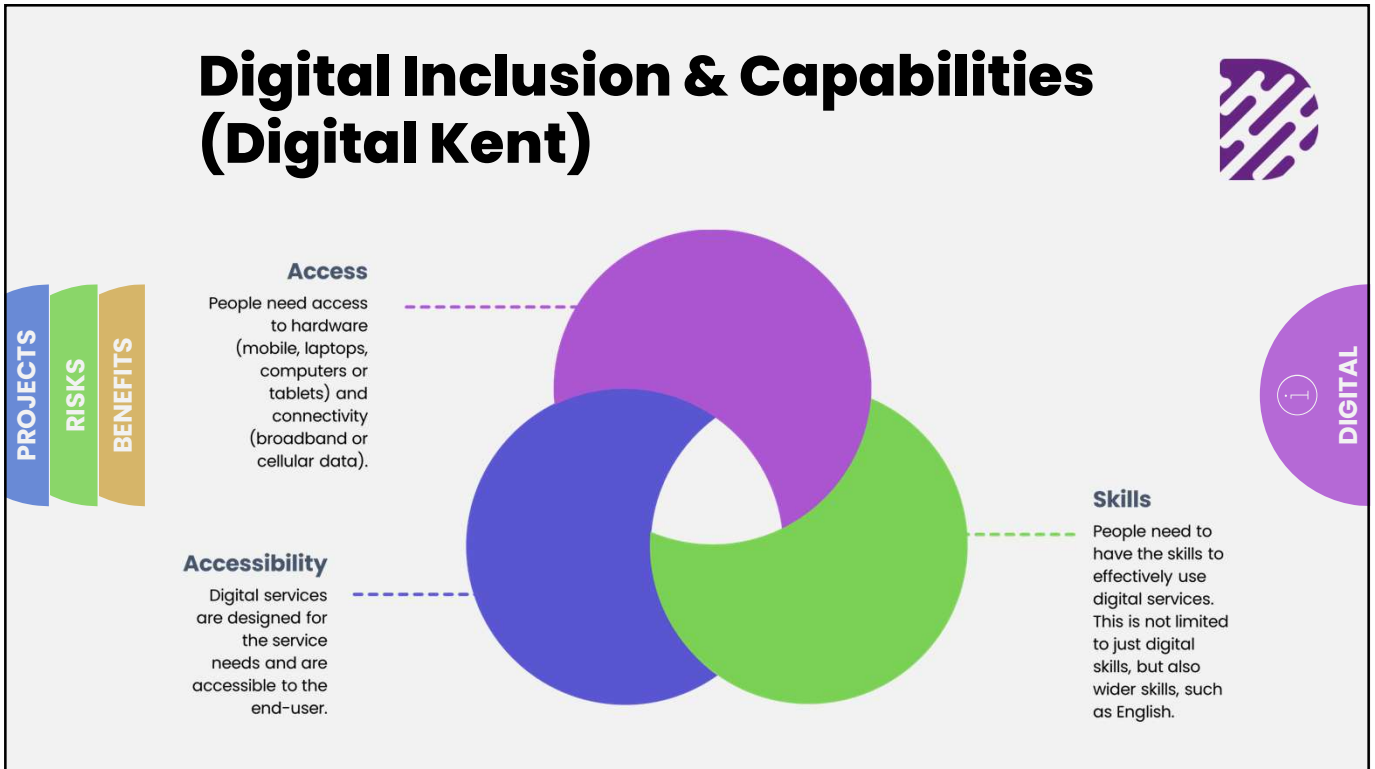
Data Sharing

Residential

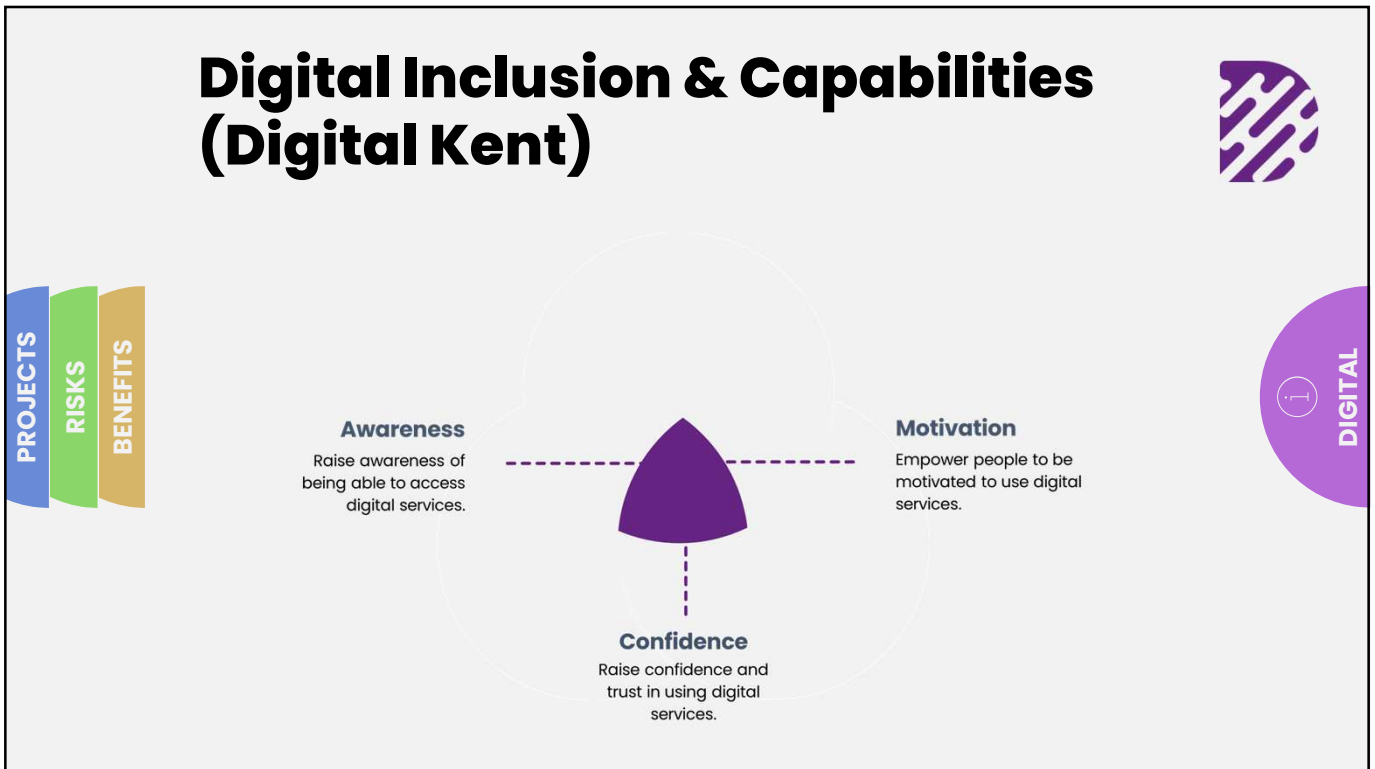
Strengthening Referrals  
(ReferKent)

Free School Meals & Healthy  
Start

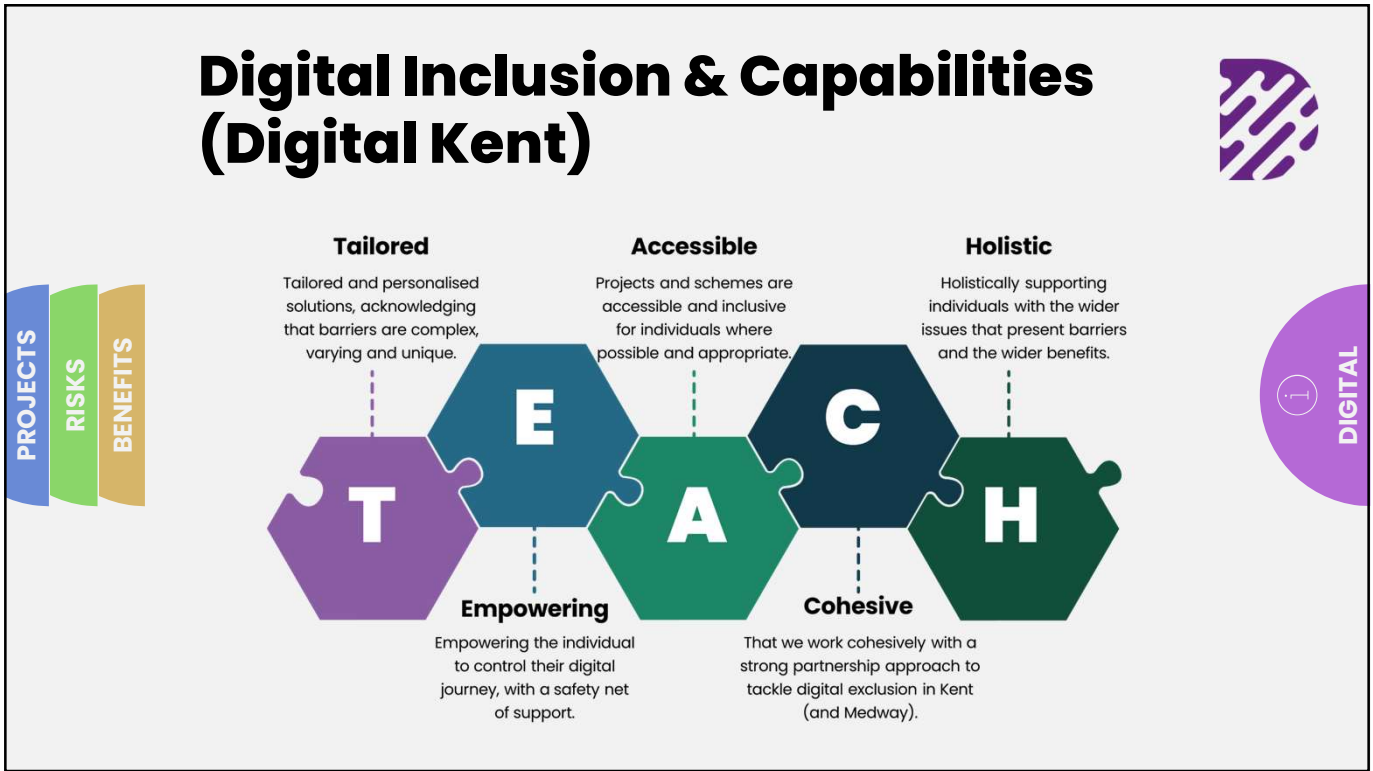
2



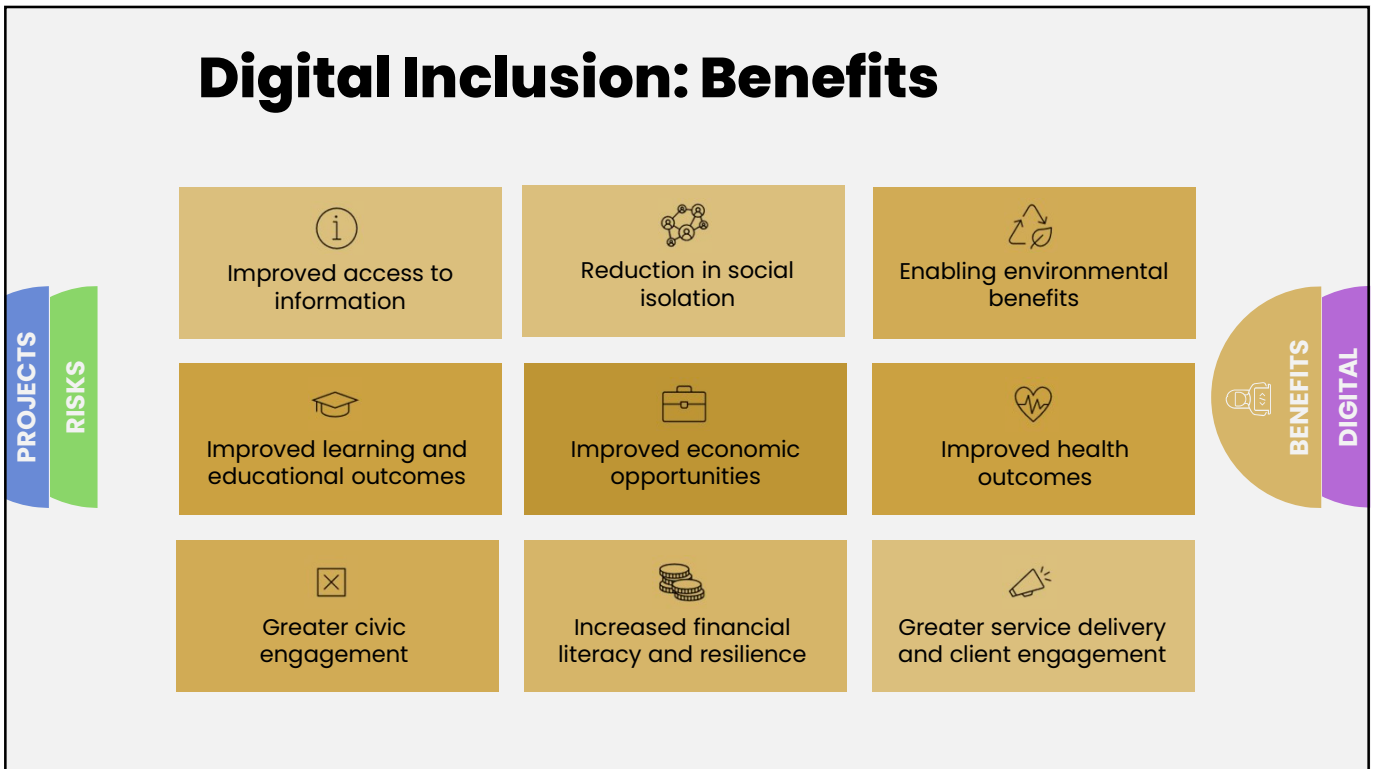
3



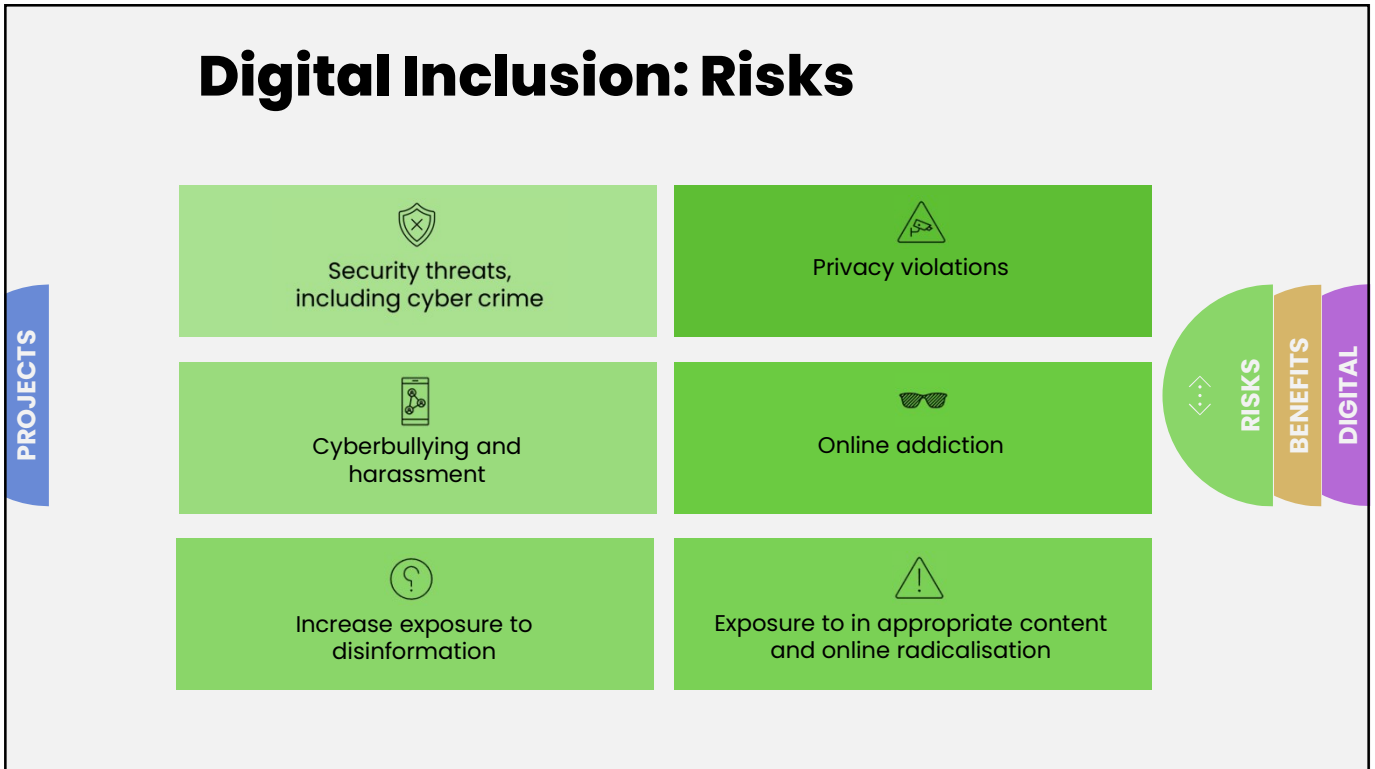
4



5



7



10



11

## Security Threats and Cyber Crime

For residents, cybercrime can often manifest in the further crimes they enable and facilitate. Unauthorised computer access can lead to a wide range of frauds, theft, sextortion, and in some cases facilitate stalking, domestic abuse and harassment.



TOGETHER, IMPROVING  
DIGITAL INCLUSION & CAPABILITIES



**NHS**  
Kent and Medway

**Medway**  
Caring You



12

## Bullying, Harassment and Domestic Abuse

- When we think of bullying and harassment, we often think of children and young people.
- The NSPCC has some great resources to help children with bullying and cyberbullying here: <https://www.nspcc.org.uk/what-is-child-abuse/types-of-abuse/bullying-and-cyberbullying/>.

NSPCC



TOGETHER, IMPROVING  
DIGITAL INCLUSION & CAPABILITIES



**NHS**  
Kent and Medway

**Medway**  
Caring You



13



## Bullying, Harassment and Domestic Abuse

- If a person sends someone threatening, abusive or offensive messages online, they could be committing an offence.
- The most relevant offences are 'harassment' and 'malicious communications'. The messages don't have to be violent in nature but would need to have caused some alarm or distress.


 TOGETHER, IMPROVING  
DIGITAL INCLUSION & CAPABILITIES


 Funded by  
Kent County Council's  
Helping Hands Scheme  
Digital Inclusion & Capabilities


 NHS  
Kent and Medway


 Medway  
Supporting You


 Kent  
County  
Council

14



## Bullying, Harassment and Domestic Abuse

- Domestic abuse can be perpetrated online through cyberstalking, including:
  - To communicate or locate personal information about a victim
  - Damaging the reputation of the victim
- For victims, it is important that they know to 'Cover Your Tracks' – clearing browser history, to minimise the abuser discovering the victims online activity.


 TOGETHER, IMPROVING  
DIGITAL INCLUSION & CAPABILITIES


 Funded by  
Kent County Council's  
Helping Hands Scheme  
Digital Inclusion & Capabilities


 NHS  
Kent and Medway


 Medway  
Supporting You


 Kent  
County  
Council


 DOMESTIC  
ABUSE  
Support Services in  
Kent & Medway

15



## Identity Theft and Fraud

- An identity thief will use personal information to:
  - Open bank accounts or use existing accounts
  - Take out credit cards and/or loans


 TOGETHER, IMPROVING  
DIGITAL INCLUSION & CAPABILITIES


 Funded by  
Kent County Council's  
Helping Hands Scheme  
Digital Inclusion & Capabilities


 NHS  
Kent and Medway


 Medway  
Saving You


 Kent  
County  
Council

16



## Identity Theft and Fraud: Signs you should look out for

- You have lost or have important documents stolen, such as your passport or driving licence.
- Mail from your bank or utility provider doesn't arrive.
- Items that you don't recognise appear on your bank or credit card statement.
- You apply for state benefits but are told you are already claiming.
- You receive bills or receipts for goods or services you haven't asked for.
- You are refused financial services, credit cards or loans, despite having a good credit rating.
- You receive letters in your name from solicitors or debt collectors for debts that aren't yours.


 TOGETHER, IMPROVING  
DIGITAL INCLUSION & CAPABILITIES


 Funded by  
Kent County Council's  
Helping Hands Scheme  
Digital Inclusion & Capabilities


 NHS  
Kent and Medway


 Medway  
Saving You


 Kent  
County  
Council

17



## Identity Theft and Fraud: Reduce the risk

- Store any documents carrying your personal information – such as your driving licence, passport, bank statements, utility bills, etc – in a safe and secure place.
- Shred or destroy your old documents so that nothing showing your name, address or other personal details can be taken.
- Monitor your credit report and regularly check your credit card and bank statements for suspicious activity.
- When you move house, contact your bank, credit and store card providers, utility providers, your doctor, etc and give them your new address – you don't want the new tenants to have the access to letters containing your personal information. You can also redirect your mail by contacting Royal Mail.










## Identity Theft and Fraud: Support available











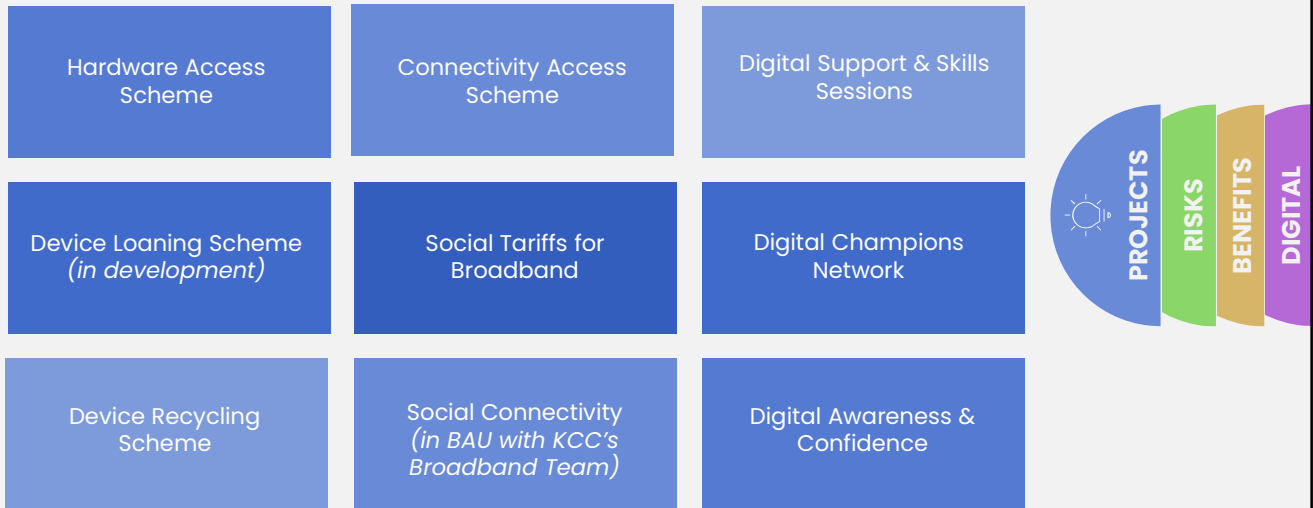









## Some of our projects and schemes...



21

## Get in touch with us...

Digital Inclusion & Capabilities  
digitalinclusion@kent.gov.uk or  
03000 410 950

Sam Lain-Rose, Digital Lead  
Sam.Lain-Rose@kent.gov.uk

Tracy Veasey, Residential Lead  
Tracy.Veasey@kent.gov.uk

Stacey Clark, Referrals Lead  
Stacey.Clark@kent.gov.uk

Simon Sim, Free School Meals &  
Healthy Start and Business  
Simon.Sim@kent.gov.uk

Matt Liggins, Data Sharing Lead  
Matthew.Liggins@kent.gov.uk

Lucy Alesbrook, Programme Manager  
Financial Hardship  
Lucy.Alesbrook@kent.gov.uk



TOGETHER, IMPROVING  
DIGITAL INCLUSION & CAPABILITIES



22