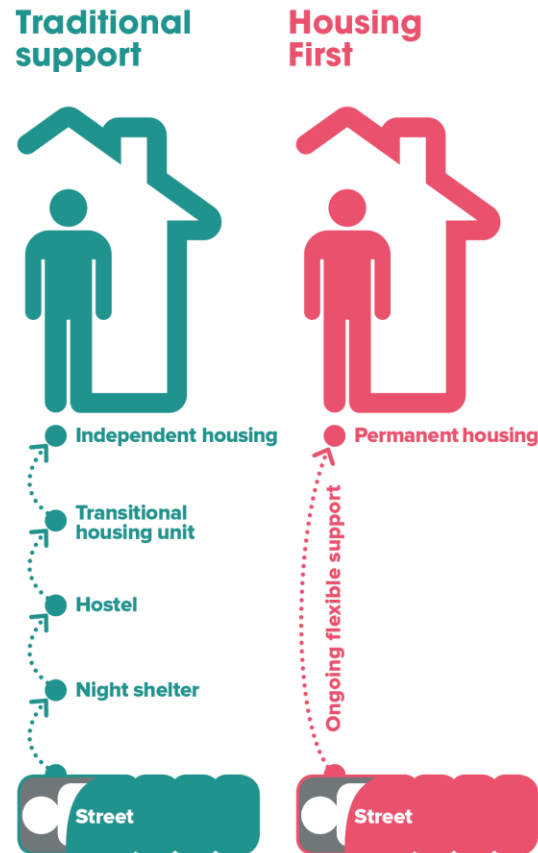




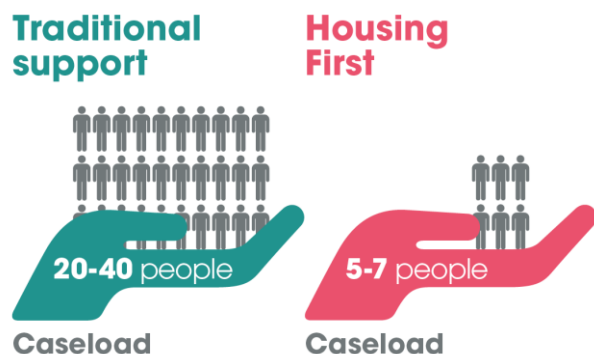
Introduction to Housing First

Jo Prestidge
Housing First England
Homeless Link

A rights based approach



What is Housing First?



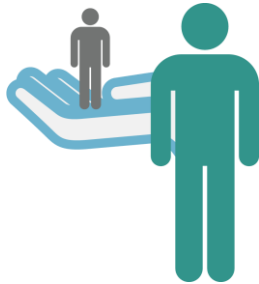
- ✓ Long term housing and support
- ✓ Complex needs
- ✓ Intensive support
- X Solution for everyone
- X Expect people to cope alone
- X Immediate access

International evidence base



- Evidence of effectiveness from a number of **Randomised Control Trials** in North America (e.g. *Gulcur L. et al, 2003; Padgett, D., K. et al, 2006; Yanos, P.T. et al, 007*).
- **Tenancy sustainment** rates around 80% in different contexts (*Pleace, N. 2016*)
- **Health and wellbeing** – general improvements but not uniform - caution
- **Substance misuse** – stabilises or reduces
- **Anti Social Behaviour** and ineffective service use – some evidence of improvements

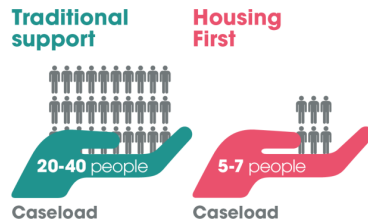
Ingredients of Housing First



**Intensive support
(ACT or ICM)**



A home



Small caseloads



The Principles



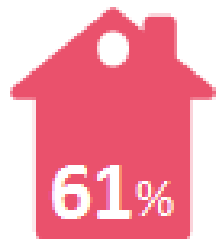
**Wider stakeholder
engagement**

The principles

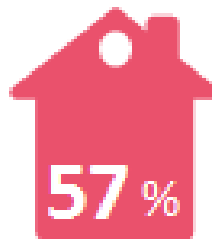
1. People have a right to a home
2. Flexible support is provided for as long as is needed
3. Housing and support are separated
4. Individuals have choice and control
5. An active engagement approach is used
6. The service is based on people's strengths, goals and aspirations
7. Harm reduction approach is used



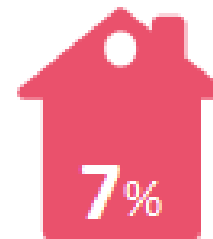
Housing supply



Social
housing



Private rented
sector



Supported
housing

Based on findings from a survey of 28 out of 32 active Housing First providers in England. July – September 2017

The benefits to housing providers



- Housing management
- Rent support
- Reduce evictions
- Universal Credit
- Social mission

<http://hfe.homeless.org.uk/resource/guidance-toolkits>

How to get involved



General Needs Housing Association

- ✓ Build partnership with new/existing Housing First provider

Housing & Support Housing Association

- ✓ Source funding for support
- ✓ SLAs between supported and general needs housing

Housing First England for guidance, support, training
<https://hfe.homeless.org.uk/>

Housing First England videos:

<https://www.youtube.com/watch?v=JiaXyIpUPtk>

[https://www.youtube.com/watch?v=DYKCn9s8gGg
&feature=youtu.be](https://www.youtube.com/watch?v=DYKCn9s8gGg&feature=youtu.be)

Housing First England



More information:

Jo Prestidge

joanne.prestidge@homelesslink.org.uk

020 7840 4420

@hf_england

Join the movement!

Visit www.hfe.homeless.org.uk