

Preventing Youth Homelessness: Meeting the Challenges Ahead

CIH Homelessness and Allocations Conference 2016

Jo Beck

Youth Homelessness Adviser

PREVENTING YOUTH HOMELESSNESS

**St
Basils**
Works with young people

Today we will look at

- The particular challenges that face young people who are at risk of homelessness
- Duties and challenges facing you as service providers now, and in the future
- The St Basils Positive Pathway and your own service models – sharing what works well, and ideas for how they might be improved

Young People Face Particular Challenges in gaining access to 'Affordable' Housing

- **Few Private Rented Sector (PRS) landlords** remain in the 'housing benefit market' – 7% in London.
- **Universal Credit** (paid monthly in arrears direct to claimant, with 7 'waiting days') will not help
- **Limited supply of social housing**, and increasing competition for 1 bed lets due to 'bedroom tax'
- Young people are only entitled to **Shared Accommodation Rate (SAR)**– shared housing is more expensive to manage, especially as HMO regulation improves standards
- **From 2019 the SAR will be applied to social housing tenancies that began since April 2016** - NHF research found 86% of tenants entitled to SAR will be affected, with average SAR/rent shortfall of £22 pw Care leavers exempt from SAR until 22, likely to be raised to 25
- **Social and Private Sector Landlords are losing confidence in letting to YP**



Young People have less money to pay the rent....

- Lowest wages, 3 x more likely to be unemployed, 41% of all zero hours contracts
- Lowest of the (frozen) benefit rates - £57.90pw JSA- and are most at risk of sanctions.
- Unemployed 18 – 21s will lose entitlement to 'housing costs' element of UC from April 2017 – care leavers, and other 'vulnerable groups' to be exempt but detail unclear
- Benefit cap lowered to £ 385pw for families- will this increase parental exclusions?



Challenges For Service Providers

- **Rising levels of homelessness and (likely) new duties on local authorities to prevent homelessness – Homelessness Reduction Bill**
- **Funding for supported housing changing – From 2019/20 LHA to be applied (but not SAR) with ring-fenced ‘top up’ funding to local authorities. 1% rent reductions to be applied from 2017 onwards**
- **Competing demands for social care and housing related support budgets – Care Act and aging population**
- **Rising numbers of looked after children and care leavers, and in children becoming LAC at 16-17**
- **Complex and multiple needs rising as a proportion – supported housing may not meet their needs**
- **Year on year reductions in your budgets, growing demands for a service**

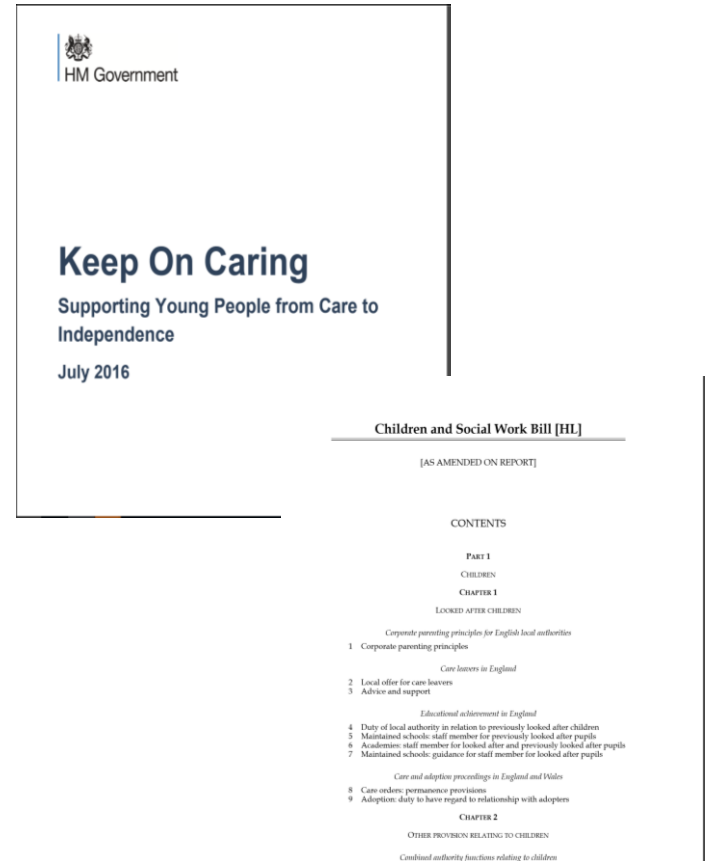
Great Expectations: Government focus on improving outcomes for care leavers

Keep on Caring' - Government Care Leaver Strategy, July 2016

- Corporate parenting - across authorities and beyond - and more pro-active. It's not just Children's Social Care!
- Improved outcomes on Education, training and employment, health (particularly mental health), staying stay, and **suitable accommodation regardless of your local housing market**

Children and Social Work Bill 2016

- Corporate parenting principles
- Must publish 'Local Offer' to care leavers, including your housing offer



PREVENTING YOUTH HOMELESSNESS

**St
Basils**
Works with young people

Homelessness Reduction Bill



- New duties to PREVENT and RELIEVE triggered within 56 days of any eligible person becoming homeless
- Duty to provide advisory services, particularly to high risk groups including care leavers, people leaving prison or youth detention
- ALL applicants must have an assessment of circumstances and needs, agree what steps applicant and LA must take to prevent homelessness or to secure accommodation
- Applicant has written record of agreement and must be notified if the LA changes plan
- Care Leavers have more choice on local connection

HRB: The future for YP services?

16-17s/ Care Leavers:

Better prevention and relief work to avoid YP becoming homeless and a 'child in need',

Planned move into supported housing (if meets YP's needs) when cannot remain safely within family network

Improved early identification of Care Leavers at risk of homelessness

Notification and assessment arrangements for YP leaving custody

Reciprocal arrangements for care leavers out of borough

Non-priority 18+

Full assessments of circumstances, needs, actions

Family mediation, negotiation and support to enable YP to remain/return until able to move on independently

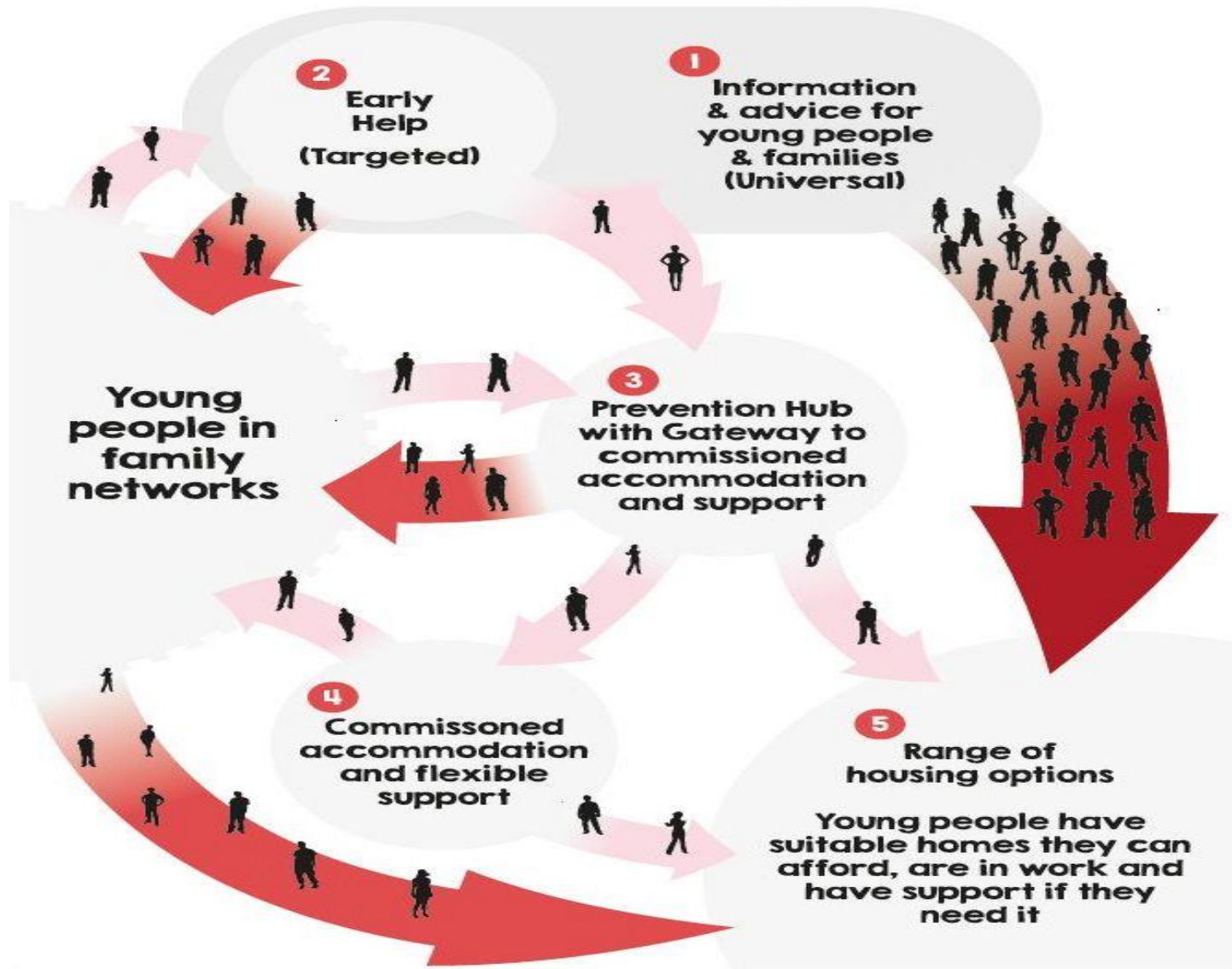
Prevention work to help YP maintain tenancy/license in PRS or supported accommodation

Money/budgeting advice, use of DHP and/or prevention budget to minimise arrears

Shared housing accommodation options

PREVENTING YOUTH HOMELESSNESS

Positive Pathway Model



PREVENTING YOUTH HOMELESSNESS

Looking at the 5 areas of the framework:

1. **Information and advice** available to all
2. **Targeted early help** to young people most at risk of homelessness
3. **Joined-up services** working together to prevent homelessness at the point of approach, gateway to supported housing
4. Commissioned **supported housing and support** to meet different needs
5. A range of safe, decent affordable **housing options available as move on** from supported housing, care or home. **Including shared and self-contained, in the private social and third sectors**

In your area

- What's working well for young people 16-17 and 18+
- What are the major gaps, pressures and challenges?

PREVENTING YOUTH HOMELESSNESS

St
Basils
Works with young people

A few suggestions to move things forward

- ✓ Making a case for explicitly addressing HOUSING for young people locally – not just HOMELESSNESS (..... if all you plan for is crisis, what will you always get?)
- ✓ Raise awareness - Identify and use existing communication channels (mainly web based) to reach parents and young people with key information on local realities of supply and affordability (and where to go for early advice etc)
- ✓ SHARE (and keep on sharing) with other professionals the local housing market realities - they often don't understand how bad it really is
- ✓ Consider options for incentivising planned move on with support
- ✓ Review your prevention activities – home visits, mediation, support to remain/return home – could you use the same tools for 18+

Working together for better outcomes for young people

- ✓ Joint prevention is still a KEY focus. High performers - 85% success of no return after 6 months
- ✓ Joint planning, joint commissioning, joint delivery – several examples - but need to involve other relevant commissioners for accommodation and support (health and criminal justice sectors)
- ✓ Protect your housing related support for YP– plan ahead for changes in funding arrangements
- ✓ Complex and multiple needs - lots of learning from Fair Chance Fund, Housing First, Psychologically Informed Environments
- ✓ Looking for new funding opportunities and partnerships that could expand the options available to young people

Some examples to look at for ideas...

- ✓ Great new website developed in Worcestershire explains options and realities to young people www.hihomie.org
- ✓ Joint assessments and successful prevention – St Basils Youth Hub in Birmingham, Royal Borough of Greenwich ‘The Point’,
- ✓ Jointly commissioned supported housing pathways – London Borough of Camden, Nottinghamshire CC, Somerset CC
- ✓ Preparing YP for independence – The Money House in Greenwich
www.hyde-housing.co.uk/tenants/advice-and-support/money-and-debt-advice/the-money-house/
- ✓ Shared accommodation schemes in social housing
 - St Vincents Housing Association Snugbug, Manchester
www.snugbughouseshare.co.uk
 - L B Barnet ‘Get Real’ Scheme <http://thebarnetgroup.org/bh/2016/04/05/get-real-project-wins-155k/>
- ✓ PRS shared housing www.crisis.org.uk/pages/sharing-solutions-schemes.html
- ✓ Innovative live & work schemes www.stbasils.org.uk/how-we-help/our-services/live-and-work

Our offer to local authorities

- Up to 2 days of our time – free consultancy
- Training, advice, information bespoke to your local circumstances

Contact us

Jo.beck@stbasils.org.uk

anna.whalen@stbasils.org.uk

To see the full Positive Pathway and Care Leaver Accommodation and Support Framework documents go to

<http://www.stbasils.org.uk/how-we-help/#positive-pathway>

<http://www.stbasils.org.uk/files/2015-10-40/16905SUCareleaversaccomandsupportframeworkLRv2.pdf>

PREVENTING YOUTH HOMELESSNESS

**St
Basils**
Works with young people