



Health & Housing working together

Gavin Smart, Deputy Chief Executive

What I'm going to talk about



- A more positive framework
- But pressures for partners
- The potential gains
- Developing place based approaches and clear targeted offers
- Examples in action
- Housing's pressures – what we need from partners

A more positive framework



NHS 5 Yr Forward view

- Strategic direction
- Prevention & public health

Care Act 2014

- Wellbeing – suitable living accommodation (and more)
- Integration with health and health related provision (= housing)

Better Care Fund

- SR + £1.5bn
- £500m DFGs – 8,500 out of residential care

MoU

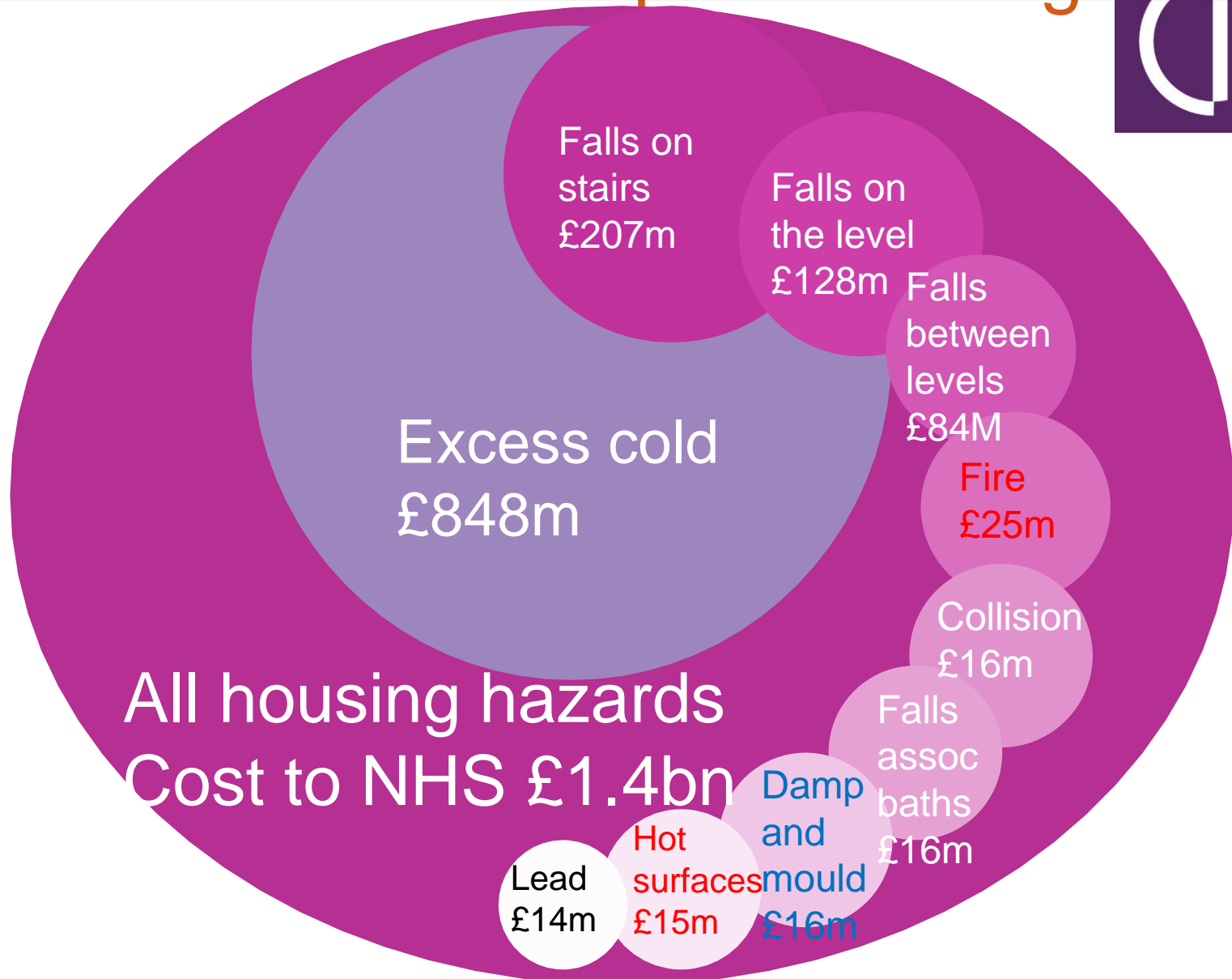
- National sign up
- Action plan
- Local MoUs

But...challenges



- **NHS** still faces savings of £22bn by 2020
- Real terms increase only 0.8% under coalition
- 29% of hospital bed days are taken by avoidable admissions
- **ASC** Real terms spending fell 8% (in spite of NHS funding transfer)
- Nos. supported fell >500,000
- Multiple conditions 50% increase, requiring £700m pa to maintain services (excl Nat Living Wage)
- NLW est extra £920m pa
- Council Tax levy of 2% exclusively for ASC

BRE Health costs of poor housing



Home at the heart of integrated care



‘We must provide a seamless service focussed on the individual within their own home. A big part of this will be working to ensure that we avoid crises in people’s care which too often result in hospital admissions...Instead they will receive the right care, when and where they need it’

Integrated Care: Our Shared commitment, 2013

- Innovation & cost effective investment, including in prevention, will be essential
- Role of home in prevention, in supporting independence, is a critical & too often forgotten
- Housing is an innovative sector

Housing support to health and care objectives



- Promotes choice, control and independence
- Secure, safe and affordable homes promote positive outcomes for many vulnerable groups
- Accessible adaptable homes support independent living
- ‘More than bricks and mortar’
- Supporting education and employment; healthy spaces; healthy eating opportunities etc.
- Social impact – identity and isolation
- Local hubs/ community resources can help to deliver health and care closer to home
- Cost benefits – invest to save, social value and VFM

How we can contribute



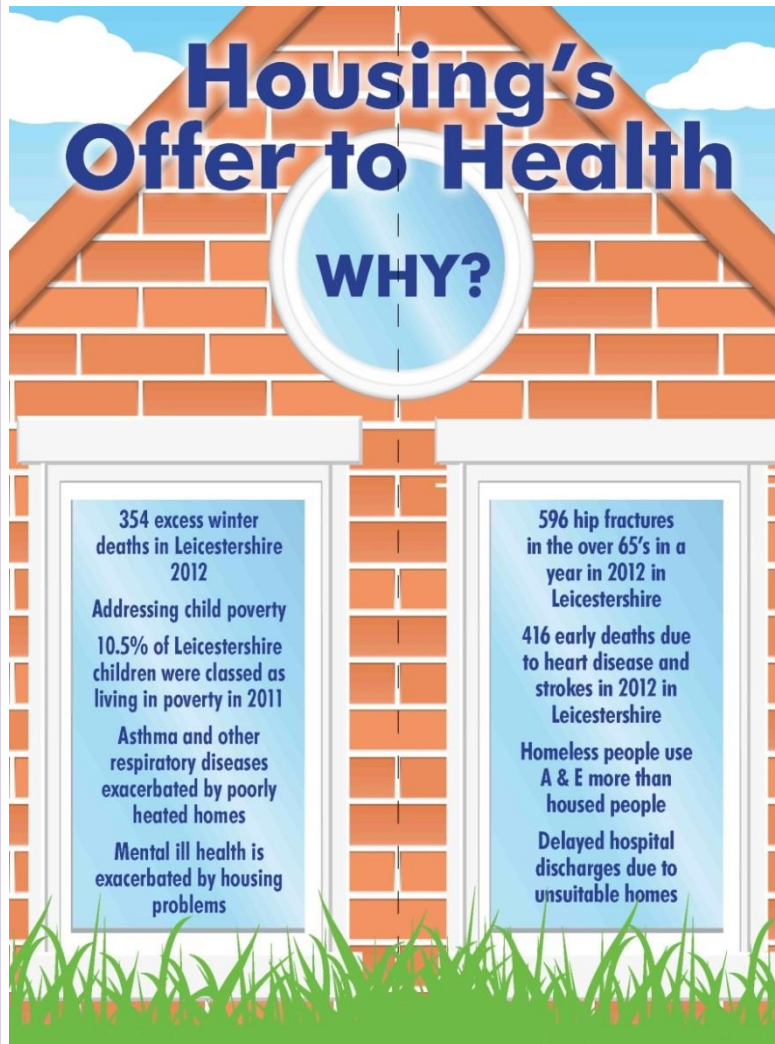
- Mapping the health and care landscape
- Local strategic framework to support relationship building
- Working smartly, making housing easy to navigate
- Contributing local expertise and knowledge – shaping the local strategies
- Identifying goals of NHS Trusts, CCGS, ASC
- Mapping assets and skills
- Existing services
- New opportunities

In practice: CCG partner



- Early identification and prevention
- Improved self management
- Supporting independence
- Increase planned care
- Reduced hospitalisation
- Supporting early discharge and re-ablement
- Supporting death in usual place of residence

Response: Districts housing offer



Hospital2Home Action Team	Deliver housing solutions to prevent delayed hospital admissions.	£ 90,000 p.a.
Handy-person	Provide practical support to prevent delayed hospital discharge and emergency admissions.	£50,000 p.a.
Housing Community Hubs for people with Dementia	Prevent emergency admissions of carers and people living with Dementia by utilising Sheltered Accommodation spaces for community hubs	District Council funded
First Contact Scheme	Prevent emergency admissions by effectively signposting to multiple agencies using one referral form.	County and District Council funded
Keeping Warm and Well at Home	Prevent delayed hospital discharge and emergency admissions by using various funding initiatives to keep homes warm.	County and District Council funded
Older Person Holistic Support/Care	Prevent delayed hospital discharge and emergency admissions by the development of locality models of holistic housing/social care/health interventions for older people.	Funding model to be developed

In practice: hospital/ midland heart

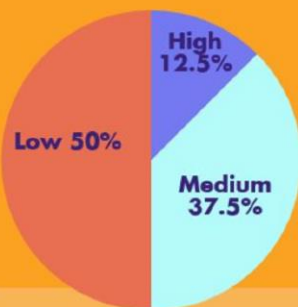


BEECHWOOD

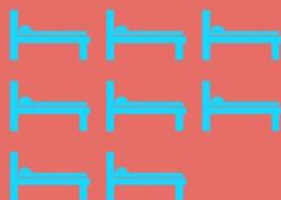
Royal Preston Hospital



Need Level



Average Length of Stay



8.3 Days

Customer Satisfaction

93.3%

Average Age: 81 years old



CITY HOSPITAL

Sandwell & West Birmingham Hospitals Trust

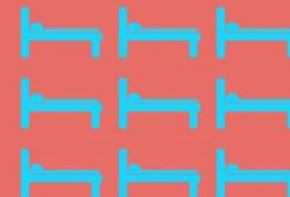


Discharged to usual place of residence



85%

Average Length of Stay



9.4 Days

Customer Satisfaction

100%

Average Age: 80 years old



In practice: North Tyneside



- North Tyneside's support services have been remodelled alongside physical improvements to sheltered schemes
- Staff trained to refer residents to admission avoidance team/ emergency care practitioner team
- Pilot saved NHS Trust £11,000 in first 3 months
- Extended across all sheltered schemes and written into older people's care pathway

What we need from partners



- Champion housing
- New supply – public land
- Revenue streams – making supported housing sustainable in the future?
- Financial capacity
- Jobs and stimulus for local economy
- Working with businesses
- Infrastructure to support new homes
- Local fora to involve housing
- Maximising their local knowledge and networks
- Appreciating their professional input
- Regular and better links – strategically and operationally

However....



Housing and Planning Bill

- Shift in focus – home ownership
- Loss of existing assets
- Managing the business plan

Welfare reform and Work Bill

- Changes to benefits, caps etc
- Challenges to income– incl. rent reduction

Autumn statement LHA cap

Conclusions



- Better framework for joint working
- Health & housing understand each other better
- Some good examples of cross sector working to deliver shared benefits
- But there is more to do
- ... and both sides face their own pressures
- The only way is up!

Resources



Chartered Institute of Housing: www.cih.org

source of information, support and professional membership

- [New approaches to housing for older people](#) – CIH briefing looking at how services are changing to meet current challenges .
- [Working Together to create the next generation of sheltered housing](#). Driving forward sector led development to meet current and future challenges.
<http://www.cih.org/shelteredhousing>
- [Developing your local housing offer for health and care: targeting outcomes](#)
– CIH framework document that helps to articulate the way your services meet partners' outcomes
-
- “How to”s on safeguarding and hoarding: succinct guides on how to identify and address critical issues: <http://www.cih.org/howtobriefings>

Resources cont.



CIH tools:

- **Service quality tool:** online resource that helps organisations to assess the quality of their support services, receive service user input and drive continuous improvement: <http://www.cih.org/sqt>
- **Value for money:** demonstrating the value and strategic relevance of services: <http://www.cih.org/consultancyservices/valueformoney>
- **Housing for health and wellbeing accreditation:** <http://www.cih.org/consultancyservices/healthyhomesaccreditation>

**Hospital 2 Home resource pack on effective hospital discharge
(multi agency):**

http://www.housinglin.org.uk/hospital2home_pack/